

DigitalFactory | uv
MUTOH Edition





CADlink Digital Factory UV Mutoh Edition RIP for Mutoh Direct to Object Printers

Terms of use

The present document is destined **for Mutoh Certified Distributors only**.

Its intention is to provide product info of CADlink Digital Factory UV Mutoh Edition software for Mutoh's Desktop LED UV object printers. This document will be regularly updated.

All information provided in this document is correct to the best of Mutoh Europe's knowledge. The content in this presentation does not lead to any legal obligations. Mutoh Europe does not accept any liability for errors.

For an editable version of this presentation, please contact your Area Sales Manager. This implies acknowledgement of the present terms of use.

All product images, illustrations and application pictures shown in this document:

- may not be used for public promotion unless Mutoh Europe is integrating these in public communication and/or marketing materials.
- may not be used for non CADlink Digital Factory UV Mutoh Edition software related promotion nor for the promotion of non Mutoh equipment/software.

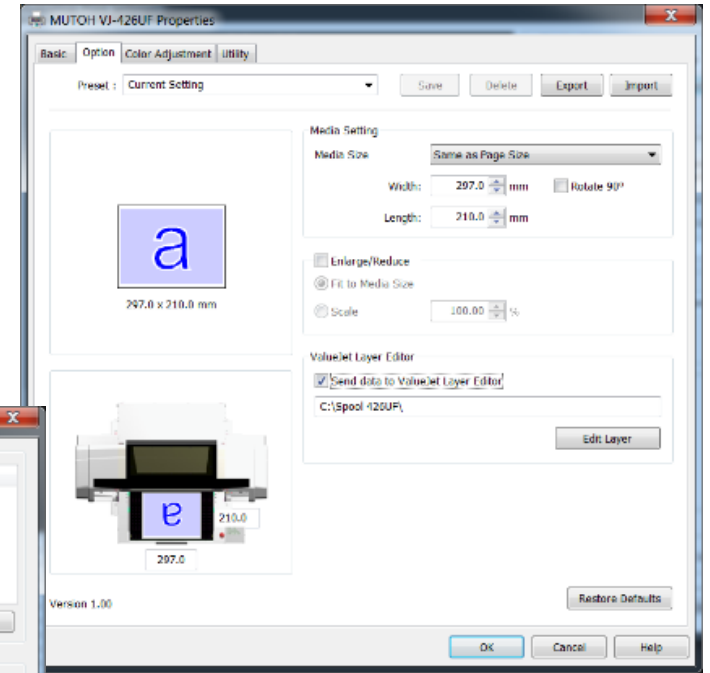
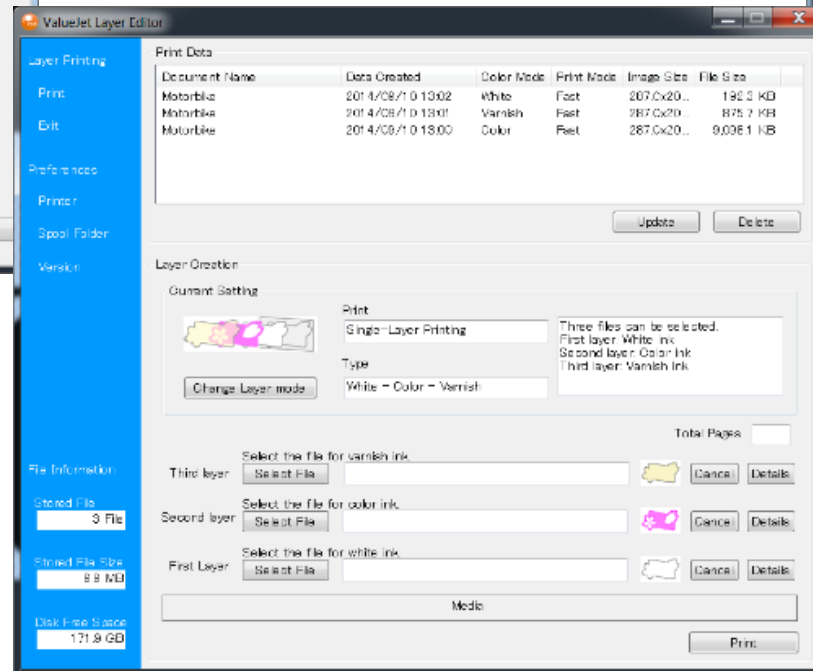
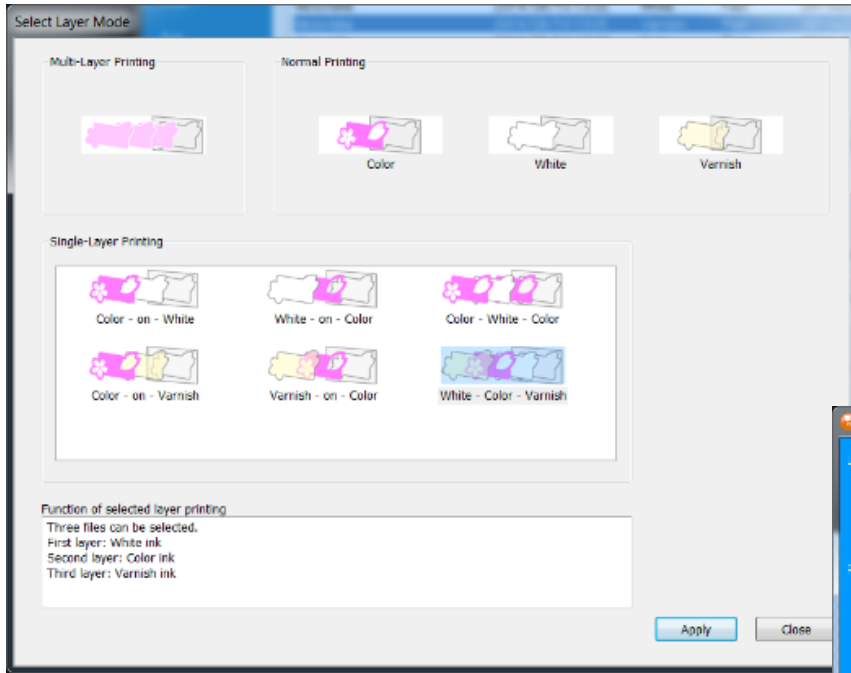
Digital Factory is a registered trademark of CADlink Technology Corporation.

© Copyright Mutoh Europe nv - All rights reserved - **Not for public release**

Unauthorised copying prohibited. Written approval by Mutoh Europe required.

In-The-Box Software for Mutoh DTO Printers

Windows Driver + ValueJet Layer Editor (VLE)



In-The-Box Software for Mutoh DTO Printers

Windows Driver + ValueJet Layer Editor (VLE)

Advantages:

- Budget friendly solution
- VLE maximises the print possibilities over a (standard) Windows driver
 - ❖ Using specialty colours like white & varnish/clear now possible in combination with a Windows System driver
- Access to many printer features and settings

In-The-Box Software for Mutoh DTO Printers

Windows Driver + ValueJet Layer Editor (VLE)

Challenges:

- No access to profiling, no exact colour reproduction
- Job preparation is labour intensive
- Job preparation requires an operator skilled at design packages like Adobe Illustrator®
- Job preparation requires knowledge of the print process.
This is sometimes not possible for the graphics designer or not possible during the graphics design stage
- Limited help functionality - No ‘How to ... ?’ videos
- “Technical” GUI

In-The-Box Software for Mutoh DTO Printers

Windows Driver + ValueJet Layer Editor (VLE)

Challenges:

- Object printing using jigs is cumbersome and time consuming
 - ❖ E.g. Layouting is done in Illustrator® and as such prohibits flexible filling of data into jig templates
- Automatic or semi-automatic production is impossible
- Variable data is not adapted to the requirements of an object printer
 - ❖ E.g. Combination with varnish finish
- Graphic user interface is not intuitive and not visually appealing

In-The-Box Software for Mutoh DTO Printers

Windows Driver + ValueJet Layer Editor (VLE)

Conclusions Windows driver, VLE & Layout and Print Tool:

- Ideal for one-off prints
- Ideal to get familiar with an object printer and to learn about the features
- Not developed to efficiently run a print shop's production

Digital Factory UV Mutoh Edition



Digital Factory UV - Mutoh Edition

Key Features

1. Drives Mutoh direct to object UV LED printer models
2. Production oriented user interface
3. Intuitive “start to finish” production workflow
4. Easy creation and handling of object jigs : flexible filling, sizing & positioning
5. Accurate colour reproduction and advanced colour management (handling white & clear inks)
6. Automated white underbase feature to easily handle jobs on transparent or non-white substrates for both vector and raster data
7. Automated black background removal feature literally blending artwork into black substrates, improving print appearance whilst reducing white ink consumption
8. Application plugins for Adobe Illustrator[®], Adobe Photoshop[®] and CorelDraw[®]

Digital Factory UV - Mutoh Edition

Key Features



9. Industrial strength PostScript and PDF Interpreter used widely in the pre-press and offset market, offering the highest level of reliability available in the print market today
10. Non limited preset job queues allowing to automate job processing in function of substrate properties, job type, printer configuration etc. : CMYK only, White underbase + CMYK + Varnish, Structure Prints,...
11. Multi-language (English, French, German, Spanish, Japanese & simplified Chinese), context sensitive help “Compass” including videos.

Production Oriented User Interface

Digital Factory v10 UV Edition: Mutoh VJ-626 US11 Auto Clear and White

File Queue Jobs Devices Tools View Help

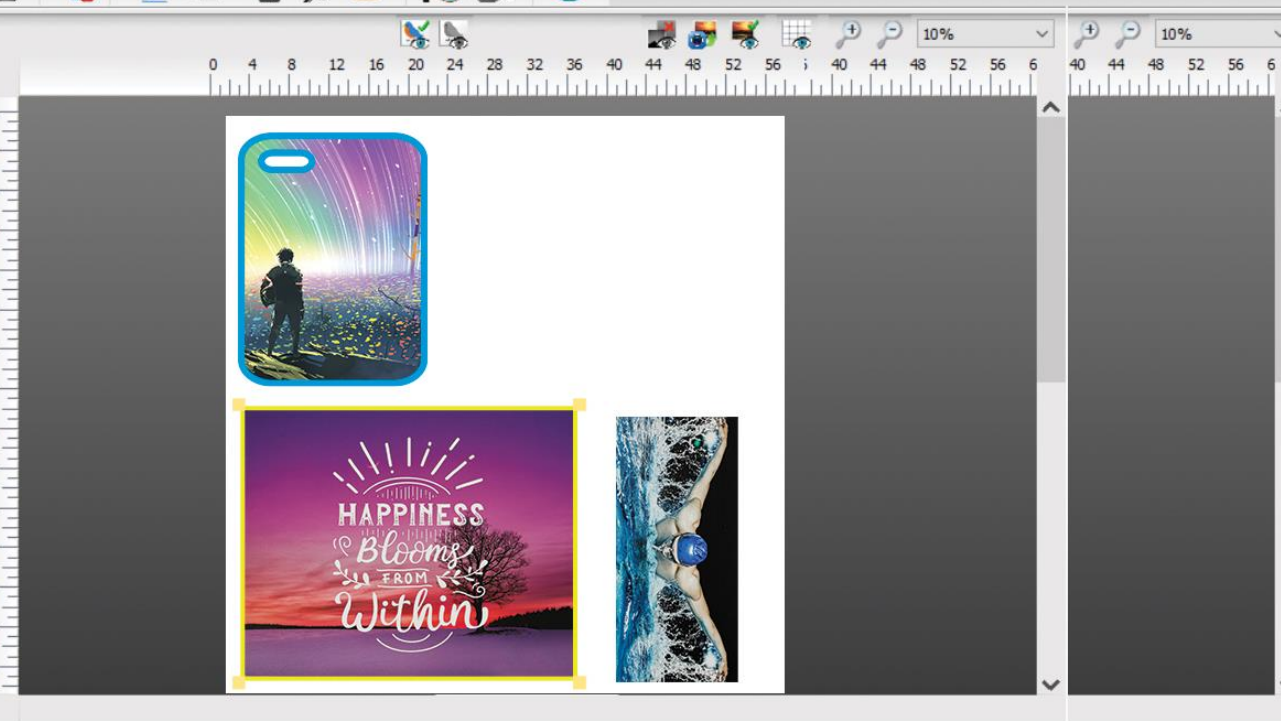
Mutoh VJ-626 US11 Color Only Mutoh VJ-626 US11 Auto Clear and White [5] Mutoh VJ-626 US11 Custom Cl

Queue Running total: 5

Name	Status	Print Mode
iPad case_3.pdf	Pending	Auto White-CMYK 720x1440
Quote.jpg	Pending	Auto White-CMYK 720x1440
pineapple.eps	Pending	Auto White-CMYK 720x1440
Agri-Soft Logo.eps	Pending	Auto White-CMYK 720x1440
Jazz.jpg	Pending	Auto White-CMYK 720x1440

Reserved Browse

Name	Status	Print Mode
face.jpg	Waiting	Auto White-CMYK 720x1440



Quote.jpg

18.25 in 17.24 in 140.38 % Rotate: None

0.00 in 0.00 in

Color Adjust

Invert Mirror

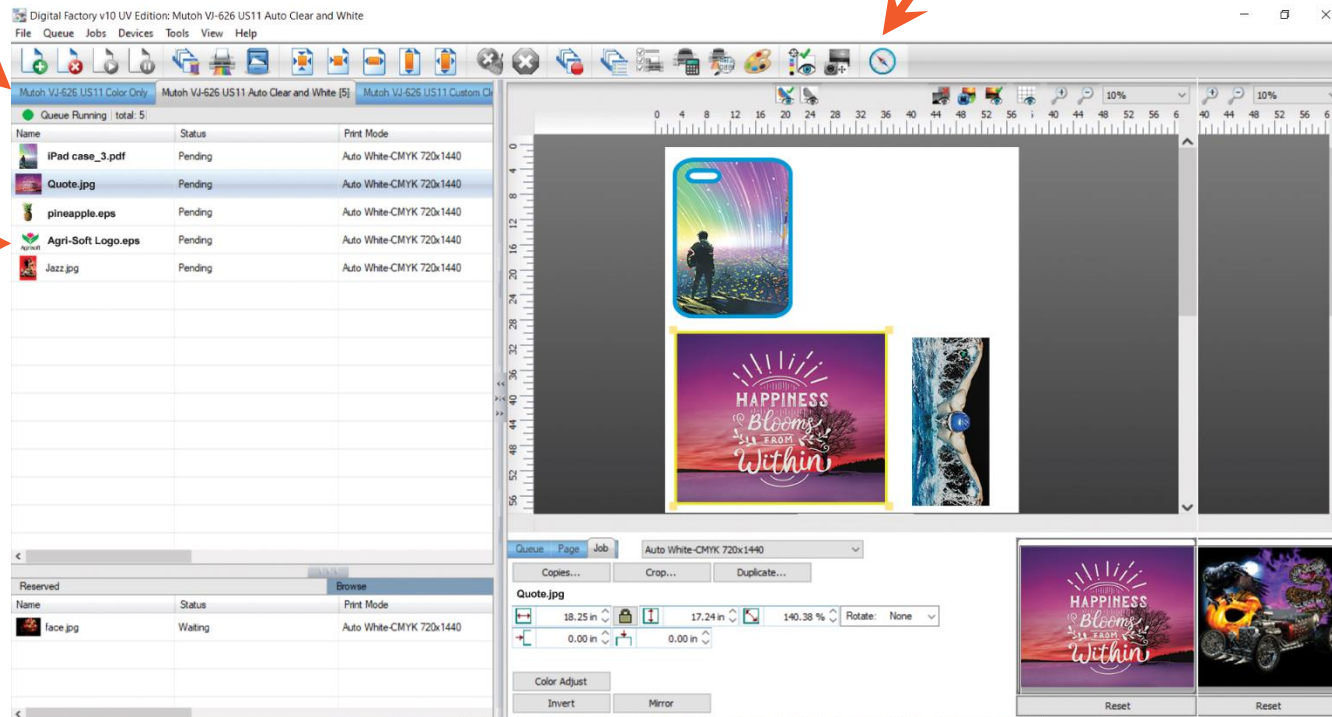
Reset Reset

Production Oriented User Interface

Individual queues to automate job processing linked to printer, print mode, substrate ...

“Compass” gives access to the context-sensitive help articles and online user guide including videos. Available in 6 languages

Jobs in process and jobs pending for the currently selected queue



Job & Layout preview
The example illustrates a partially filled mobile case jig

Selected job information and easy-edit options

Windows space to view archived jobs or use an integrated browse window to locate files

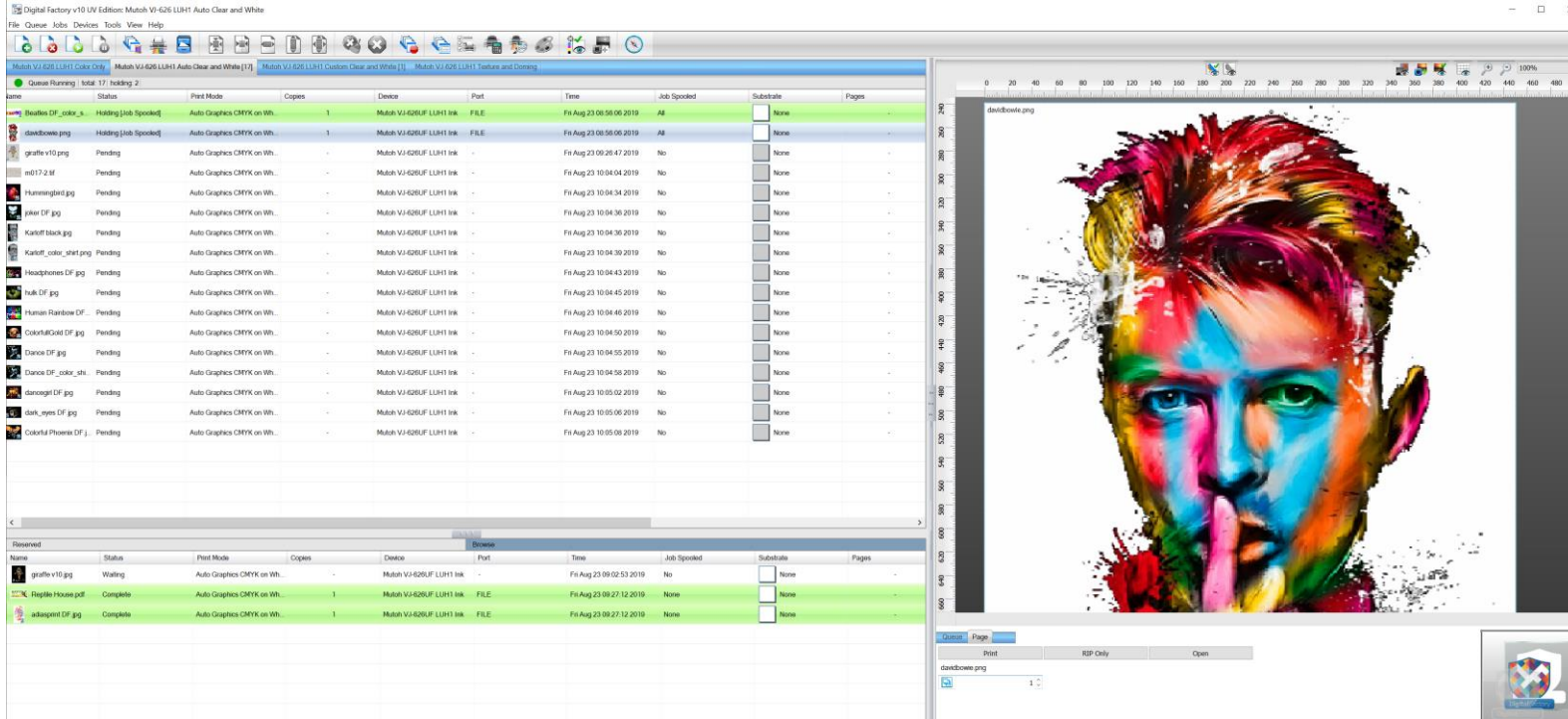
“Start To Finish” Production Workflow



Workflow Advantages !

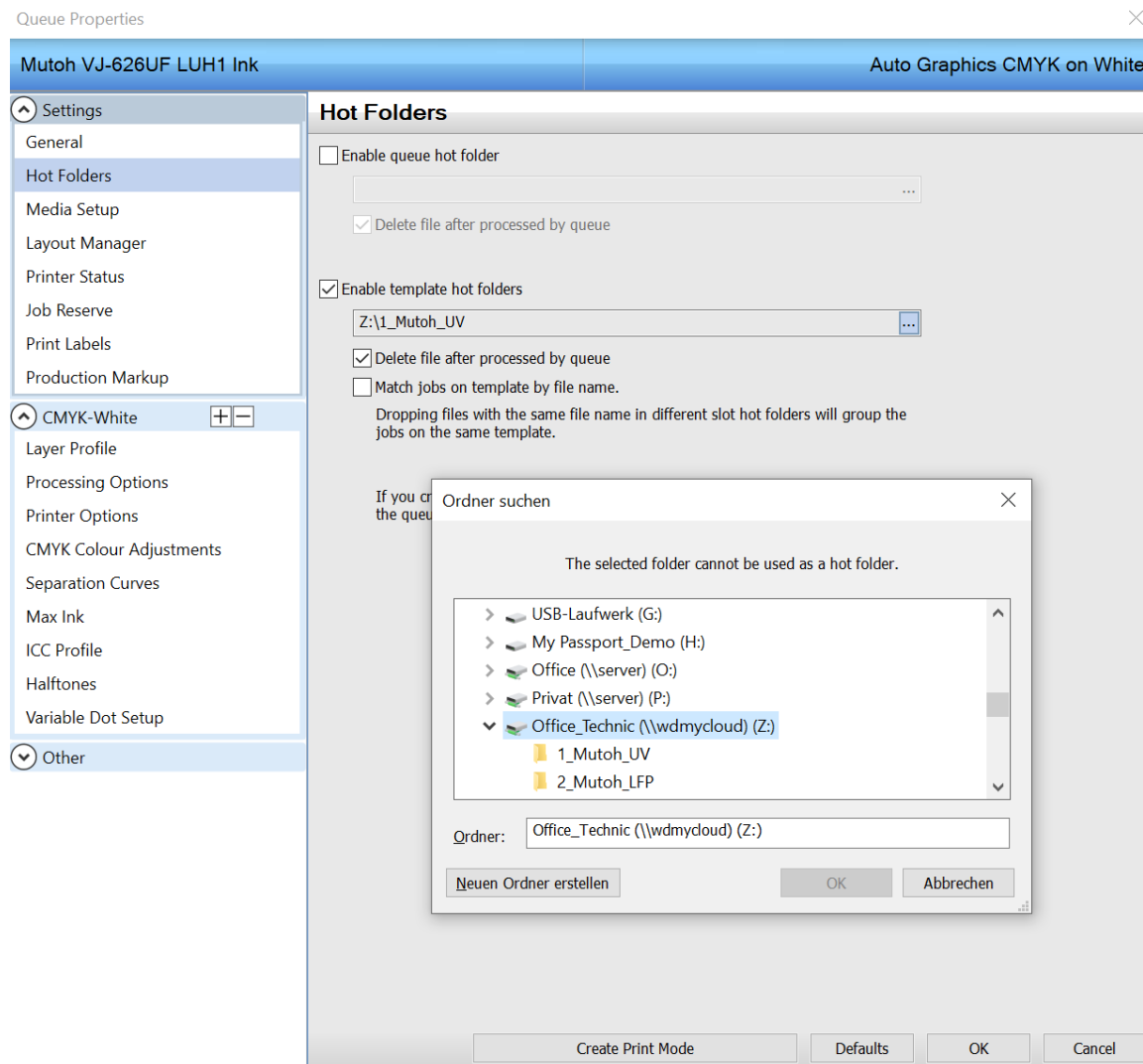
- ✓ Centralised pre-production and job management controls all in a single location
- ✓ Workflow can be entirely configured to match production requirements from manual production to fully automated production
- ✓ Intuitive visual interface designed to limit training and reduce the potential for errors
- ✓ Network printing via hot folders - All queues can be installed & “seen” as a network printer

Visual Production Manager



- ✓ Manage all print production from a central location
- ✓ Multiple queue, multiple printer tab-based interface
- ✓ Complete scheduling, prioritising, visual preview interface

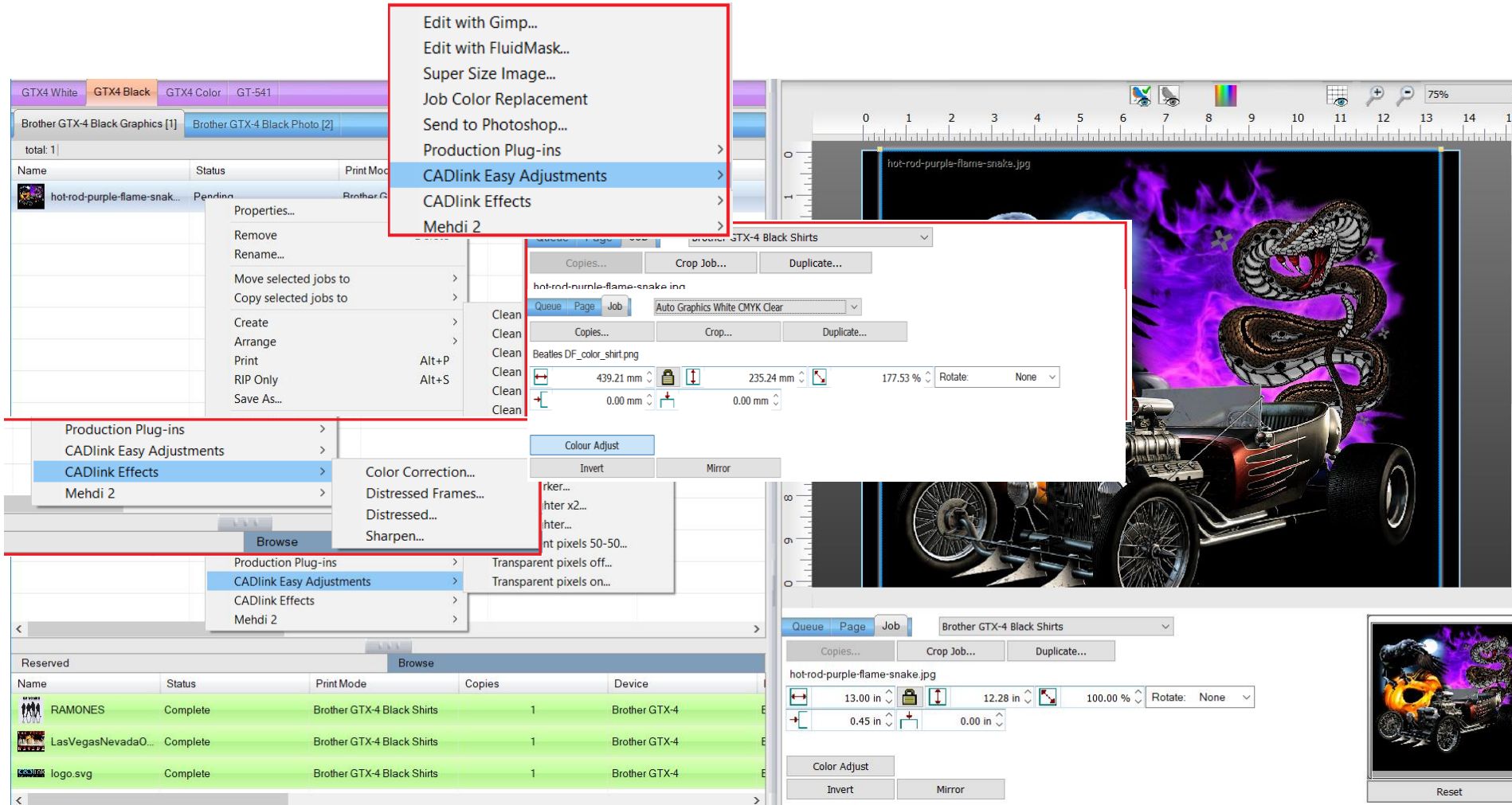
Hot Folder Support



- ✓ Automated network printing with queue-specific hot folder support
- ✓ Streamlines & organises high volume production



Pre-production Tools



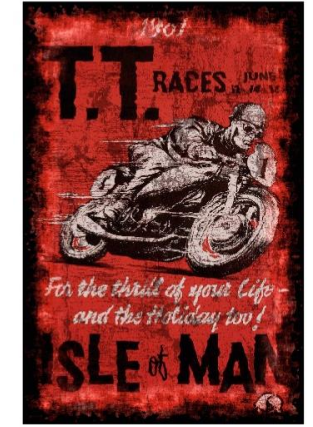
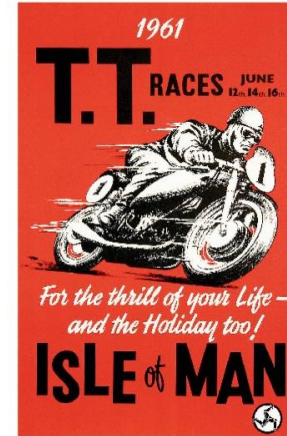
- ✓ Image editing and special effects filters
- ✓ Image clean-up and colour correction
- ✓ No need to use third-party pre-press or design applications

Distressed Filter



DigitalFactory | uv
MUTOH Edition

- ✓ Very popular special effects filter built in
- ✓ Easy to use interface
- ✓ Add value to prints

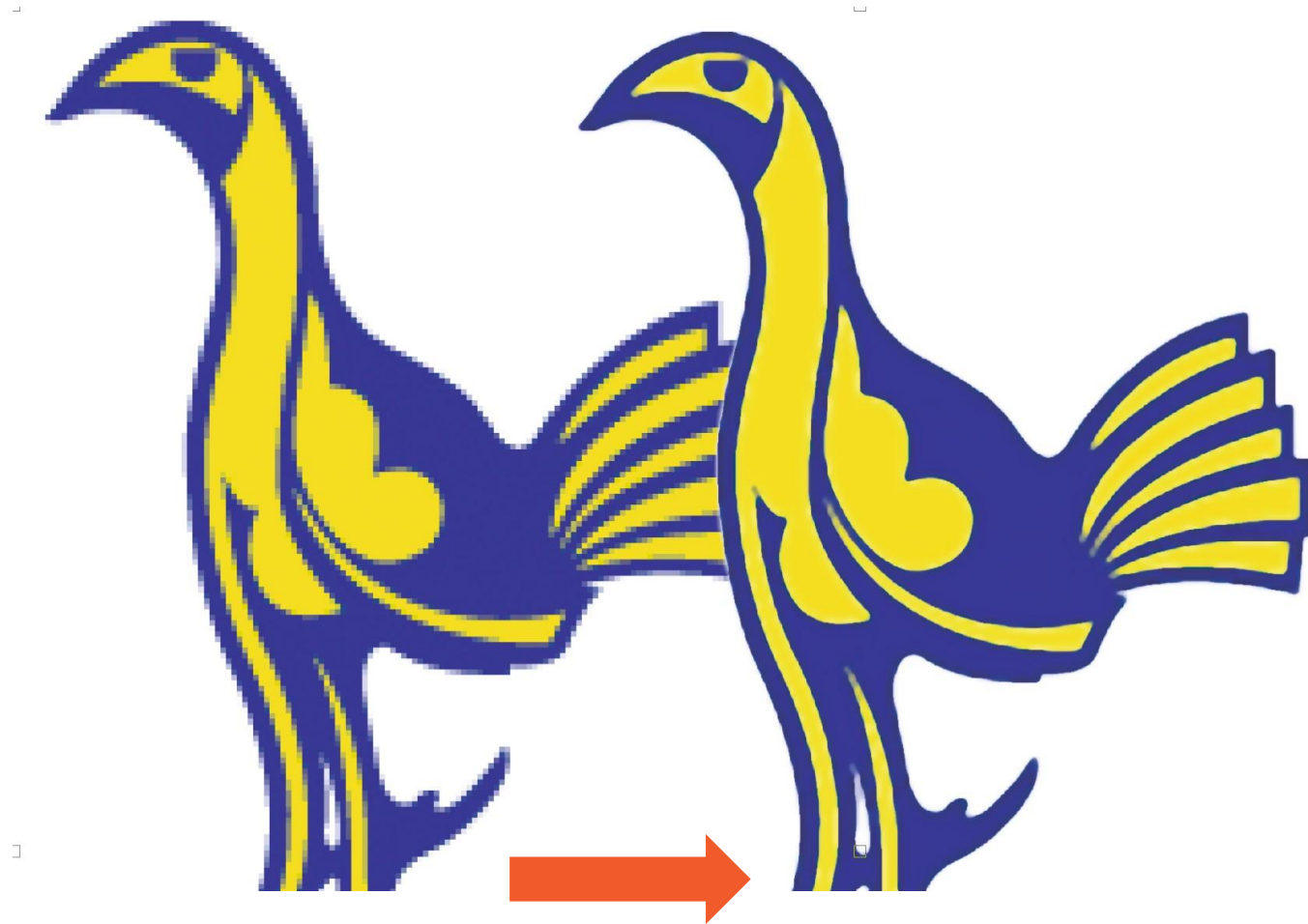


Background Removal Filter

- ✓ Fluidmask™ plug-in included
- ✓ Simple “paint by numbers interface”
- ✓ Accurate removal of backgrounds even in most detailed images



Super Size Image

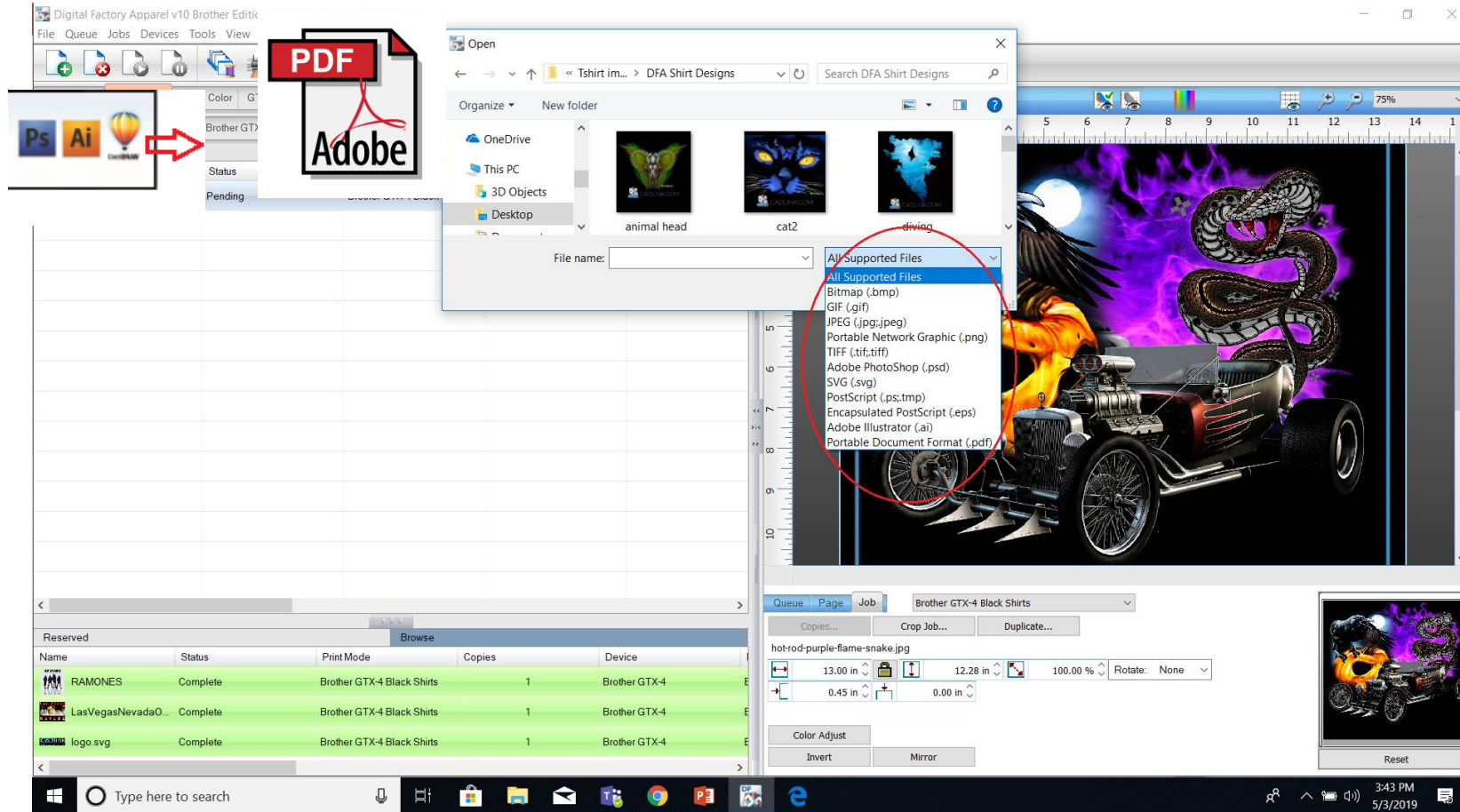


- ✓ Built-in resampling tool
- ✓ Dramatically improves image resolution for output
- ✓ “Wizard” interface for quick step-by-step image improvement

Seamless File Transfer/Support



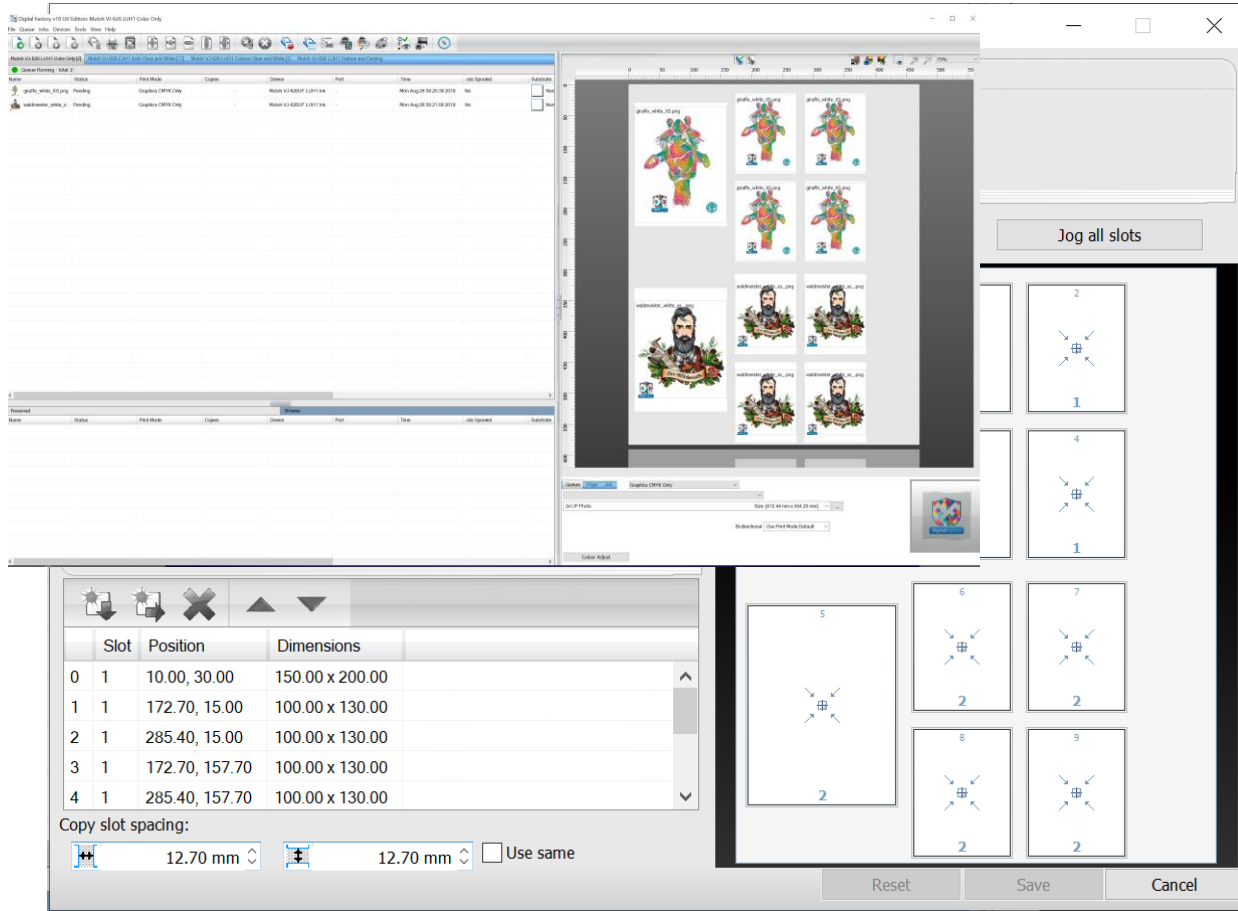
DigitalFactory | uv
MUTOH Edition



- ✓ “Send-to” plugins for Adobe® and Corel® products
- ✓ All common file formats supported: Vector and Bitmap
- ✓ Industrial strength .pdf support



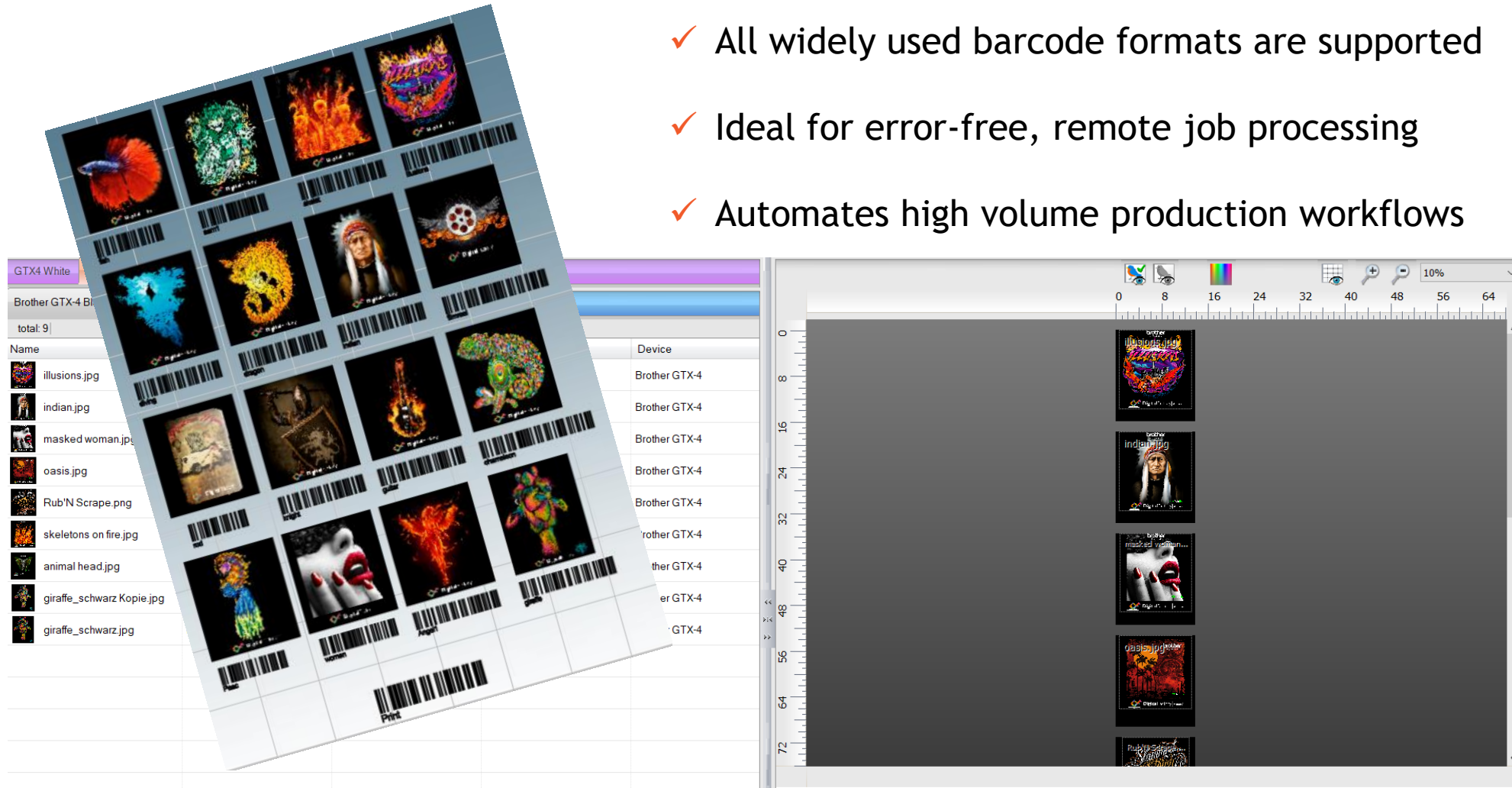
Templates



- ✓ Templates setup pre-configurations for size, copies and positioning of single or multiple images on a page. Copies can even be different sizes and images can be automatically scaled and rotated as required
- ✓ When combined with templates hot folder it provides the perfect configuration for automated printing and is in use by large internet printing companies such as Zazzle, Disney....

Barcode Job Processing *

- ✓ All widely used barcode formats are supported
- ✓ Ideal for error-free, remote job processing
- ✓ Automates high volume production workflows



(*) Barcode processing included in Digital Factory UV - Mutoh Edition.
The creation of barcodes, however, requires CADlink's Digital Designer Software.

High Fidelity Colour Management

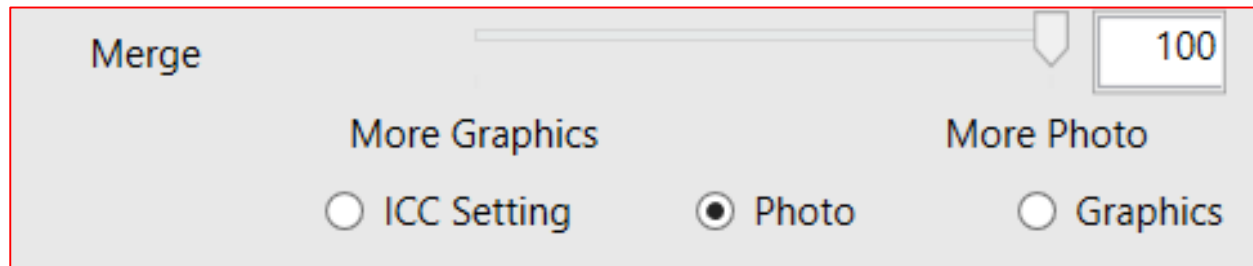
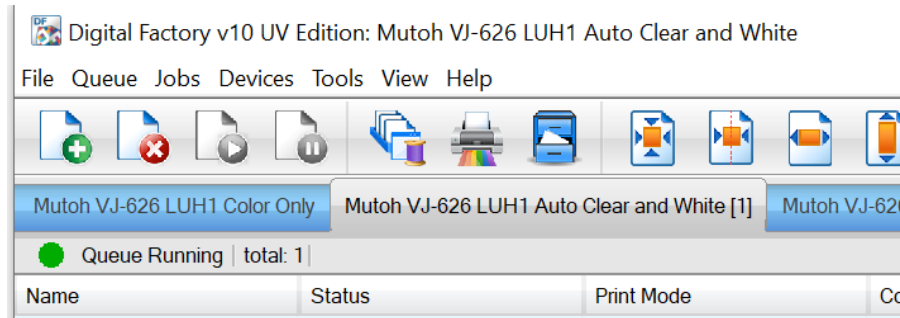


Colour Management Advantages !

- ✓ Automated use for the beginner
- ✓ Advanced use for the power user
- ✓ Incredibly vibrant colours alongside precise colour matching
- ✓ Technology-leading white ink management
- ✓ “Image blending” into substrate = higher value, more attractive print quality
- ✓ Optimised ink usage = cost savings

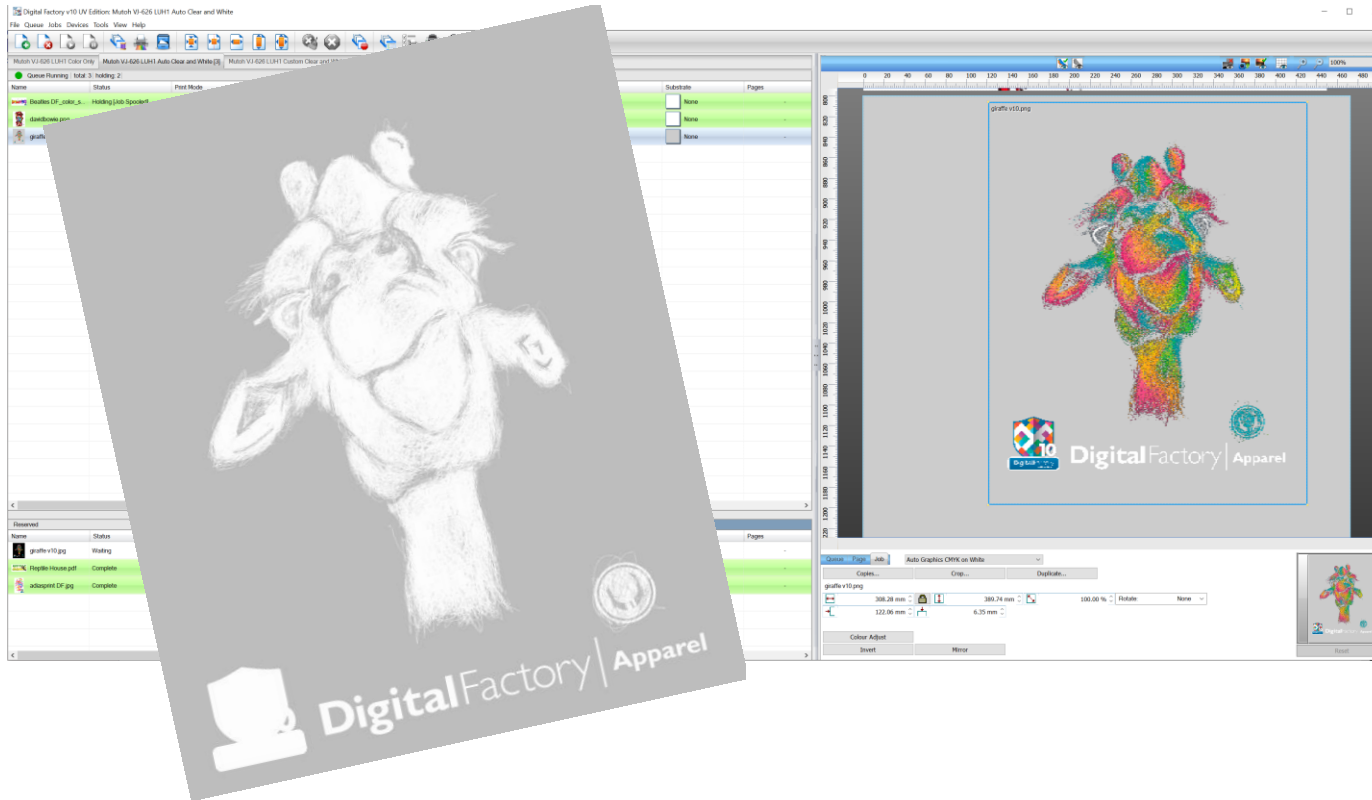


Custom Created Colour Profiles & Queues



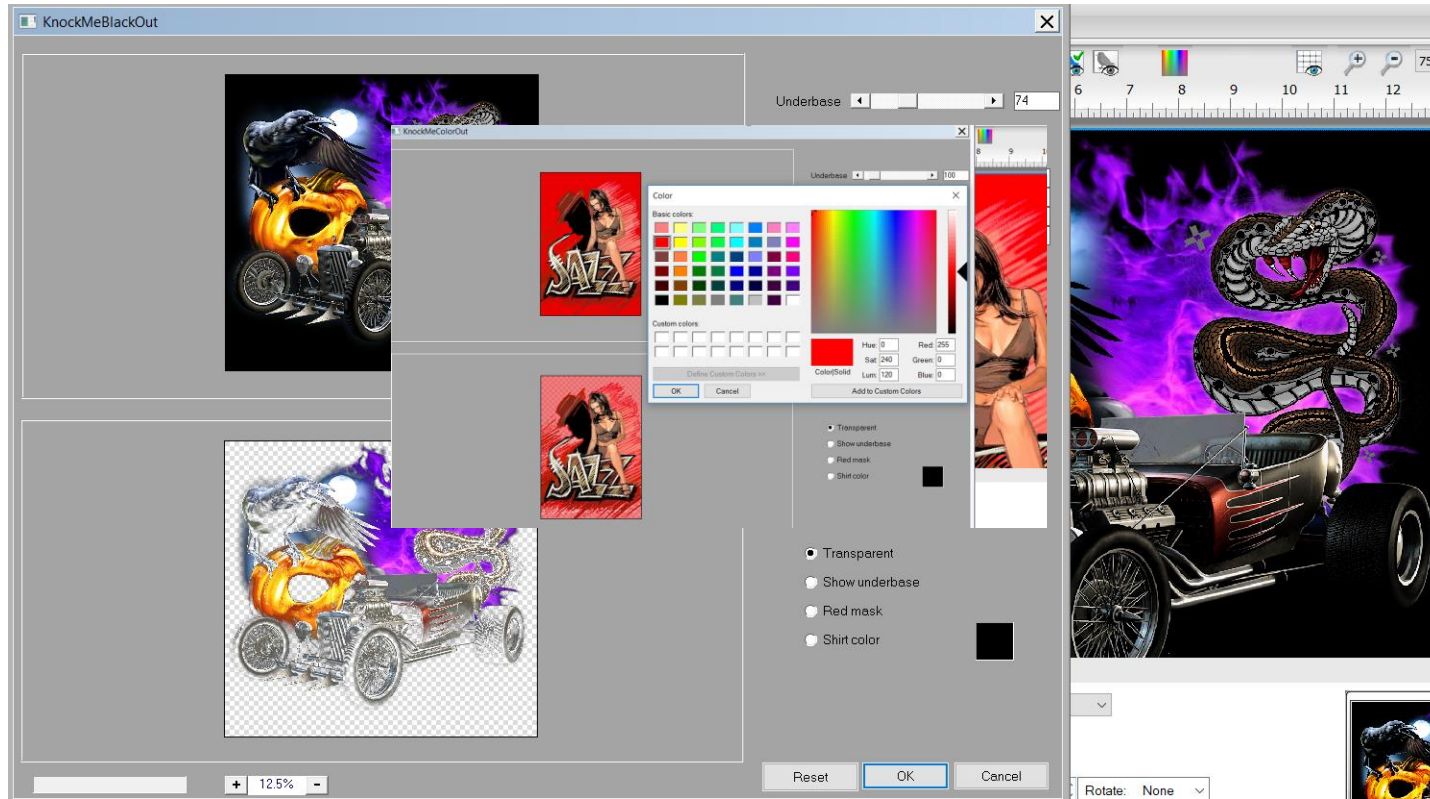
- ✓ Professionally created colour profiles included
- ✓ Specialised profiles for different workflows like CMYK on White or Texture/Doming
- ✓ Advanced image rendering, customise rendering intent unique to DF

Industry-leading White Ink Management



- ✓ Dramatically reduces the job preparation times when an underbase is required
- ✓ Reduces white ink usage
- ✓ Users do not have to sacrifice quality by converting vector artwork into raster to use the automatic underbasing feature
- ✓ Improves print appearance quality
- ✓ Automatic white underbase creation for almost any file format including bitmaps with transparency
- ✓ Supported formats: PNG, TIF, PSD, PDF, EPS, PS, SVG

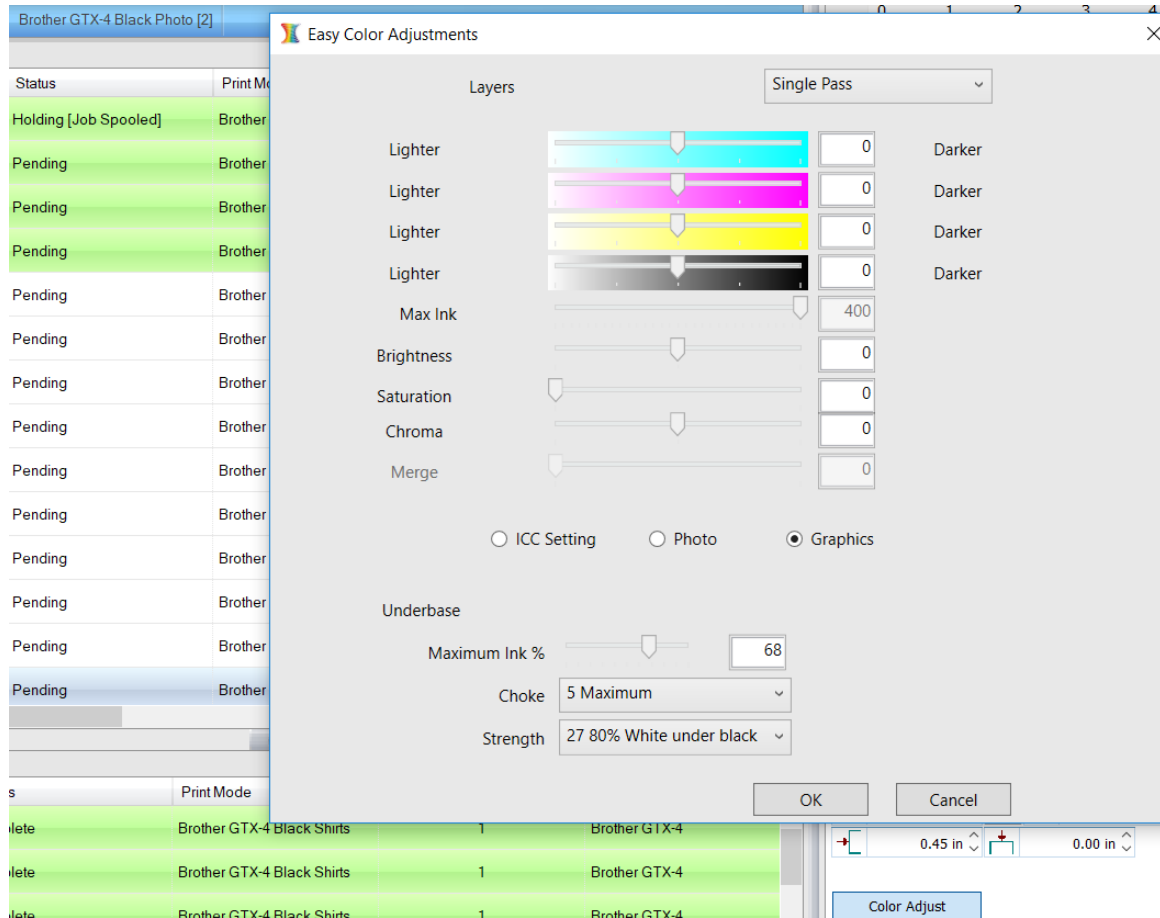
“Knock-me out” Plug-ins



- ✓ Remove matching colours from printed designs
- ✓ Print on coloured/clear substrates as easily as on White - No pre-processing
- ✓ Automatic black removal and blending into the black substrate



Easy Colour Adjust



- ✓ Quick and easy adjustments to individual print jobs
- ✓ Select by colour channel
- ✓ Adjust white underbase or highlight ink volumes

Advanced Colour Controls

Job Ticket Properties

Mutoh VJ-626UF LUH1 Ink Auto Graphics CMYK on White

Settings

CMYK-White

Layer Profile

Processing Options

Printer Options

CMYK Colour Adjustments

Separation Curves

Max Ink

ICC Profile

Halftones

Variable Dot Setup

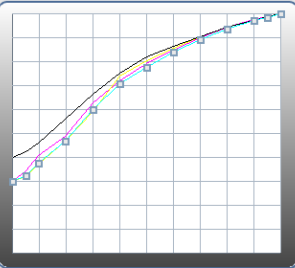
Other

CMYK Colour Adjustments

Input data

By levels

By density



0%	0.00	60%	29.55
5%	1.63	70%	40.04
10%	3.18	80%	53.28
20%	6.56	90%	62.61
30%	10.98	95%	67.69
40%	16.05	100%	70.20
50%	22.72		

Use same curve for all

Cyan

Reset to Print Mode

Reset to Defaults

Curve Sets

Calibration

Press Calibration

Create Print Mode

OK

Cancel

- ✓ Complete colour control for maximum print quality
- ✓ Precise adjustments for substrates of different types.
- ✓ Industry standard ICC support

Digital Factory UV
Mutoh Edition
Order Codes



RIP Software for Mutoh DTO Printers



Order N°	Description	RRP in €uro
DF-1000-P-UV1	Digital Factory UV - Mutoh Edition	1.995

Digital Factory UV - Mutoh Edition

Dealer Dongle for Mutoh Certified Distributors



Highest License Dealer Dongle for Mutoh Certified Distributors

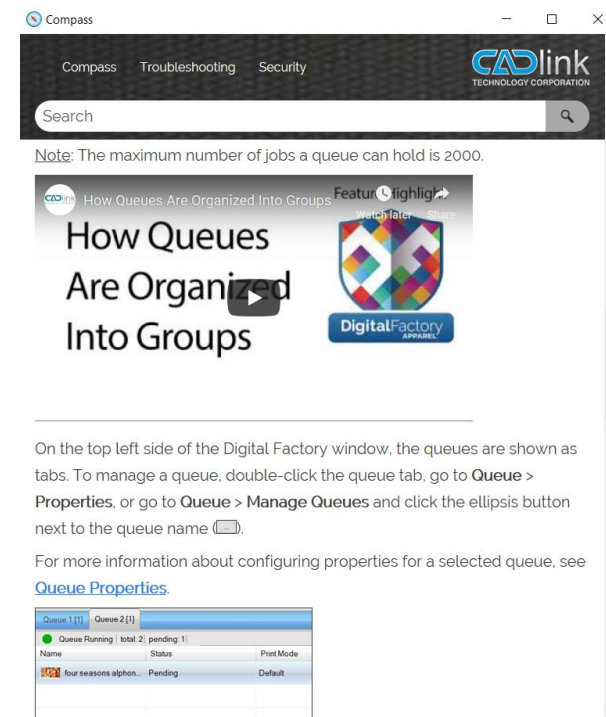
- ✓ Digital Factory UV - Mutoh Edition
- ✓ + Digital Designer = a full fledged professional graphic design software for direct to object printing.

Order N°	Description	RRP in €uro
SL-9999-P-DR	Digital Factory UV - Mutoh Edition + CADlink Digital Designer - Dealer Dongle	299

Digital Factory is More than just Software

- ✓ Software and documentation available in 8+ languages
- ✓ Interactive, all inclusive “Help” system, Compass
- ✓ YouTube video resource library

(<https://www.youtube.com/channel/UCe5sgTSWIWs1Nhk3Ef855bQ/featured>)



Compass

Compass Troubleshooting Security

Search

Note: The maximum number of jobs a queue can hold is 2000.

How Queues Are Organized Into Groups

On the top left side of the Digital Factory window, the queues are shown as tabs. To manage a queue, double-click the queue tab, go to **Queue > Properties**, or go to **Queue > Manage Queues** and click the ellipsis button next to the queue name (⋮).

For more information about configuring properties for a selected queue, see [Queue Properties](#).

Queue Name	Status	Print Mode
four seasons alphon...	Pending	Default

Digital Factory Tech Assist

CADlink's Tech Assist Program

- ✓ E-mail : support@cadlink.co.uk
- ✓ Please provide dongle number when sending an e-mail.