



RIP Software



Genuine Mutoh RIP software

Get the best from your Mutoh wide-format printer with Mutoh VerteLith RIP software offering **advanced 6-channel support**. You will be able to tackle the widest range of print jobs including multi-layer artwork requiring white and/or varnish layers.

VerteLith™ is built around the **Harlequin® host renderer**, ensuring fast RIP processing times for both PDF and PostScript files, as well as perfect handling of transparencies and spot colours.

The VerteLith RIP integrates **halftone screening technology** specifically developed for inkjet, called “Clear Tone”. This Mutoh proprietary technology will allow you to seamlessly produce the best possible gradients and skin tones.

Your output can be perfectly prepared for the next step in your production process through the finishing toolset, allowing you to perform flexible tiling and place crop marks or grommets.

Product Highlights

- Built around Harlequin® Core
- Straightforward & powerful user interface
- Simple workflow
- Impressive features list, including finishing toolset
- Professional profiling tools included
- Best possible output results from Mutoh printers
- Mutoh halftone screening : best possible gradients and skin tones
- Optimized features for DTO printers : jig printing with automatic layout
- Can also be hooked up to non-Mutoh RIP solutions
- Multi language chat support



Watch product movie



VerteLith™ - Mutoh Genuine RIP Software

Achieve Unmatched Image Quality and Workflow Efficiency

High Quality Technology to optimise the performance of Mutoh printers

Watch feature movie



MUTOH halftone screening technology

Mutoh proprietary "Clear Tone" screening for lowest graininess. Best possible skin tones and gradations.



MUTOH Clear Tone

MUTOH CMYK Wide colour gamut profile

ICC input profile "MUTOH CMYK" maximizes the colour gamut



Japan Color 2011

Accurately process PDF transparencies

More reliable output through accurate processing of PDF transparencies & drop shadows



VerteLith processing Improper processing

Two Preview Functions to reduce mistakes and waste

Watch feature movie



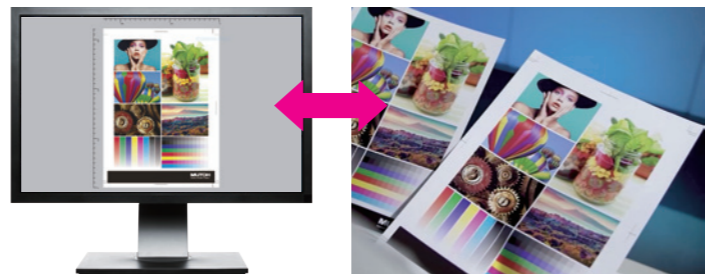
RIP preview

RIP preview: visualize the actual print dots prior to printing



Soft proof

Soft on-screen preview



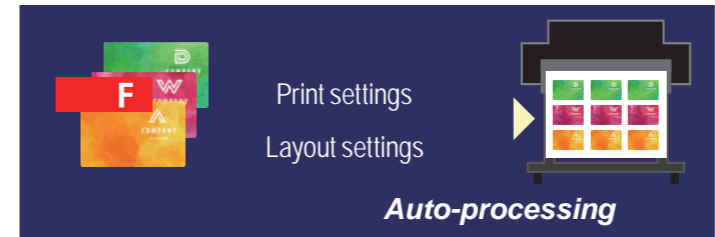
Workflow Efficiency

Watch feature movie



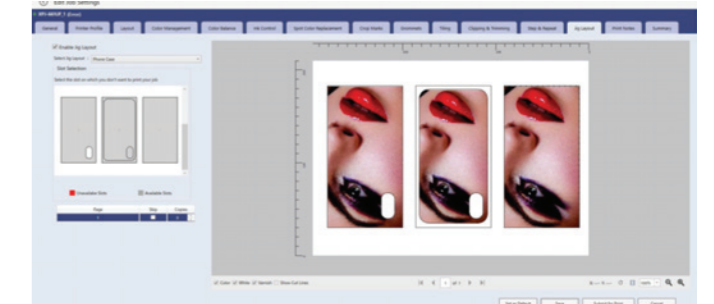
Automated layout processing and multi-page PDF printing

Prepare an integrated multi-job PDF. In addition to "Print settings", "Layout settings" can be also set in the hot folders.



Jig layout function

Set the printable area for each slot, and reproduce the opening shape of the target object.



Simplified JIG production via 2.5D printing using varnish



Can work efficiently in tandem with the automated layout using "Multi-page PDF". Saves time by avoiding to outsource JIG production.

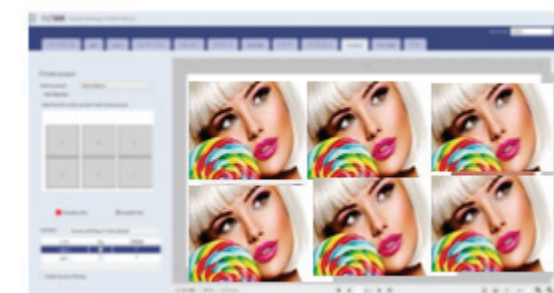
Efficient Multi-Layer Printing

Watch feature movie



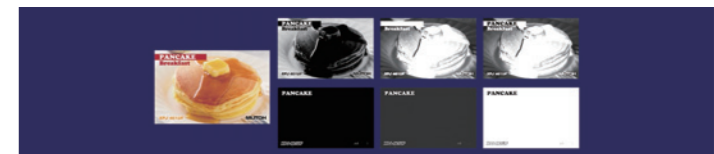
Automated multi-layer printing with multi-page PDF

Possibility of automated layer printing using a multi-page PDF. Prepare a PDF with layers divided into pages. In addition to "Print settings" and "Layout settings", "Layer settings" can be set in the hot folders.



Auto-generation of spot colours

Possibility of automated generation of spot data (White & Varnish). Select from 6 different modes.





Key Feature List

- Printer dashboard with status overview
- Job definition: size, rotation, mirror, clipping, trimming
- Job finishing: step & repeat, tiling, crop marks, grommets, choke, bleed, print notes
- Integrated jig definition, automated jig layout, advanced jig layout with non-print zones & cut-outs, printing of 2.5D DIY jigs
- Multi-pass layer printing (from single page & multi-page sources)
- Nesting (Automatic nesting / Individual setting of nesting job / Multi-pass layer printing (Multi-pages))
- Automatic generation of white/varnish layer(s)
- Integrated Colour Management & ICC profiling Tools
- Spot Colour Replacement
- Colour Adjustment & Ink Control Tools
- Print history logging & print statistics
- Ink & Media shortage notification
- Proofing Tools: Soft Proofing & RIP Preview
- Pass-Through Functionality to integrate the use of non-Mutoh RIPs
- Job Export & Import
- 64-Bit RIP - Compatible with PDF-VT/2.0 – TIFF – JPG – PS/EPS

Printer Compatibility

XPJ-461UF, XPJ-661UF, VJ-426UF, VJ-626UF, XPJ-1641SR, XPJ-1682SR, VJ-628, VJ-1324X, VJ-1638X, VJ-2638X, VJ-1638UH, VJ-1638UH Mark II, VJ-1638UR, VJ-1638UR Mark II, VJ-628MP, VJ-1627MH, VC-600, VC2-1300 & VC2-1800



XPJ-461UF



XPJ-661UF



XPJ-1682SR



VJ-1638UH2

Operating Environment

Operation System	Windows 10 [64-bit] Windows 8.1 [64-bit]
CPU	Intel® Core™ i5 3GHz or better
Memory	8 GB or more
Hard Disk	SSD is recommended when outputting to multiple printers 10 GB or more (*1)
Interface	Ethernet (*2) USB 2.0 (*3)
Display resolution	1920 x 1080 pixels or higher (*4)

(*1) When using the archive function, secure sufficient capacity

(*2) It is recommended to have a network port that supports Gigabit Ethernet, which is required when connecting to a printer equipped with Gigabit Ethernet

(*3) Recommended when using a USB-connected cutter and a spectrophotometer

(*4) For soft proofing, a display with monitor calibration is recommended

Distributed by

